



Wireless Access Control Light Commercial Lockset

ASSA ABLOY

The global leader in
door opening solutions.



Access Control

Common access points,
and emergency exits



RFID Technology



User friendly Software



Features and Flexibility

ASSA ABLOY Wireless Access Control Light Commercial locking solution provides you with all the features you will need to manage your security requirements and provide peace of mind to all users.

Our locking solutions provide total flexibility, adapting our solutions to your specific needs.

Contents

Wireless Access Control Light Commercial Lockset **4**

- Entrance Mortise locks with latch & deadbolt
- Storeroom Lock Mortise Latch Only
- Lever Designs

Access Management Components **5**

- User Access Cards
- Access Management Setting Cards
- Management Cards
- Mechanical Key
- Encoder
- Door Access Controller

Access Management System **6**

- Software
- Computer Requirements

Product Part Numbers **7**

Wireless Access Control Escutcheon

RFID Proximity Identification Technology

Product Features

- Stand-alone Electronic Wireless Access Control lockset with RFID Proximity reader
- Powered by 4xAA batteries that provide up to 12 months normal usage
- 500 event audit trail
- Stainless Steel Escutcheon
- 2 alternative Stainless Steel handles
- High security mortise lockcase available in two European versions
- Panic release function – the deadbolt and latch are automatically retracted by inside handle for easy egress in emergency situations
- 3 point steel latch construction with an antifriction mechanism
- High quality card reader that reads with optimal accuracy

Door Opening Time:

Open the door after pressing the handle, automatically locks within 5 seconds

Under Voltage Indication:

Early warning given for low batteries - units will continue to operate for approximately 50 times until such time the batteries can be changed

Working Conditions:

- Anti-Static Interference: >15000V
- Working Humidity: 20%-98%
- Working Temperature: -20°C - +70°

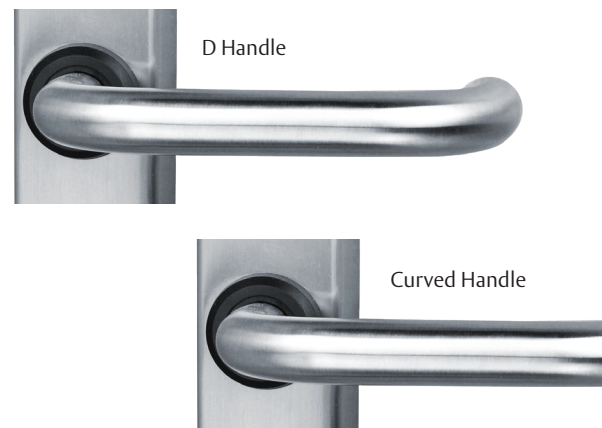
RFID Card

- RFID Card Type: ISO 14443A MIFARE®
- Frequency: 13.56MHz
- Induction Distance: Approx. 30mm

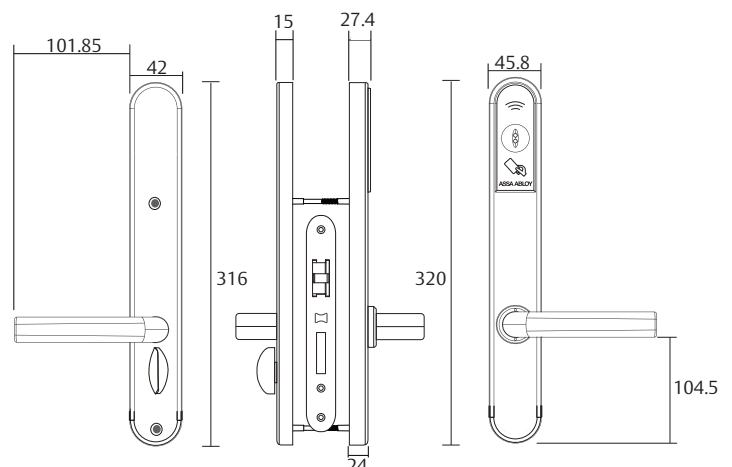
Escutcheon Design



Lever Designs



Escutcheon Dimensions



Access Management Components

Access Cards

User Cards: Opens locks (which it has been granted applicable access rights) within the “Access Control System” within a specific time period. The access rights for each user are programmed by the software and encoder

User cards will not open doors that have the internal ‘Privacy mode’ set

Access Management Setting Cards

Setting Card: Set the Address ID of door lock

Time Card: Set the door lock “real time”

Recorder Card: Reads the Audit Trail Information from the locking devices

Software Management Cards

Special IC card: Activates the card issuing system. (Management Software)

Reset Card: For initializing the door locks. (Red Light upon presentation indicates a fault.)

Mechanical Key

Cylinder + Key Each Wireless Access Control Escutcheon Lockset is equipped with a mechanical key override to assist with gaining entry

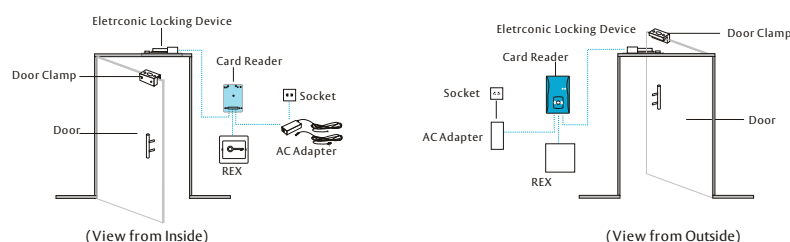
Encoder

- Plug-in-and-Play USB Card Encoder
- Easy to learn and use: it easily assigns new users and cards, it modifies them or invalidates lost or stolen cards
- Programs all Cards Types except for the Special IC card, which is used to activate the software management system
- Reads the audit trail of locks and cards
- Windows® based



Door Access Controller Wall Reader

- RFID Door Access Controller Wall Reader can be used on an entry door as part of the complete wireless access control system. It can also be used on any other common area doors in the building



- The RFID Door Access Controller Wall Reader can be used with a number of different electronic lock types. Compatible with electronic magnets, drop bolts, motorized locks and electric strikes
- Includes the correct power supply and request to exit button (REX) on the inside of the door to allow convenient free egress for all users



ASSA ABLOY

Operating Instructions:

1. Please hold the card close to lock
2. Green Light indicates lock is open
3. Turn handle to open the door

The global leader in
door opening solutions

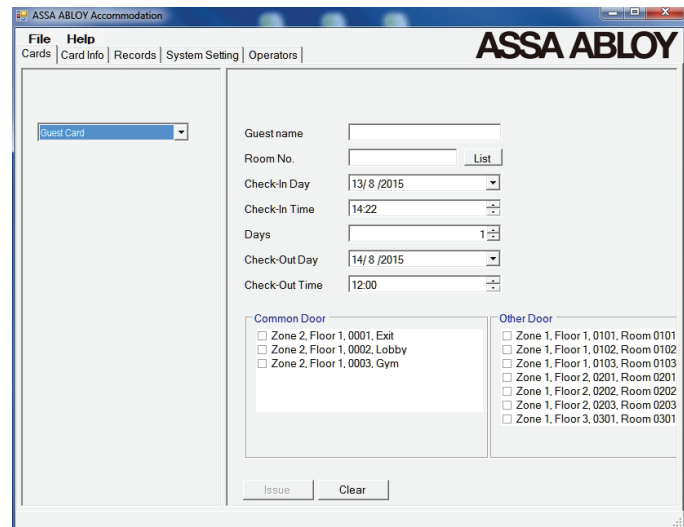
ASSA ABLOY

Access Control Management System

Software

A simple to use software system that makes it easy to manage and maintain your access control

- Basic door management software system that is simple to add and delete doors/users as necessary
- Flexible user access rights
- Software Management Cards for activating card issuing system and initializing the door locks
- Access Management Setting Cards for setting the Wireless Access Control Lock ID and “real time” clock.
- Audits: Show and report on;
 - Lists of individual doors
 - Identification of users
 - Doors by floor, building, block, zone etc.
 - A report of every opening/closing registered by all locks/readers
 - All events relating to the operation of the software (Logins etc.)
- Different levels for operators. (Administrators)
- Intuitive Windows® based software connected to a USB card encoder to program/issue cards



Computer Requirements

ASSA ABLOY Desktop Client

Supported Operating Systems: Windows 7, Windows Server 2003, Windows Server 2008, Windows Server 2008 R2, Windows Vista, Windows XP

System Memory: Minimum 2 GB

Hard Disk: 1 GB of Disk Space

ASSA ABLOY Server / Client

Windows 7, Windows Server 2003
Windows Server 2008, Windows Server 2008 R2

Minimum 4 G
4 GB of Disk Space

Processors:

ASSA ABLOY Desktop Client & ASSA ABLOY Server / Client:

X86: Pentium III-compatible processor or faster (Processor Speed - 1.0 GHz or faster)

X64: Minimum: AMD Opteron, AMD Athlon 64, Intel Xeon with Intel EM64T support, Intel Pentium IV with EM64T support (Processor Speed - 1.0 GHz or faster)

Product Reference Codes Functions

Product Part Numbers

ASSA ABLOY's Wireless Access Control Semi Commercial Lockset Solution Product

Software

| | |
|-----------------|---|
| AA-ACC-SOFTWARE | Management Software (Includes One System Special IC Card) |
| AA-ACC-ENCODER | Card Encoder |

Locksets / Escutcheon

Entrance Mortise Lock

| | |
|-------------------|--|
| AA-ACC-EN-LOCK-SL | Escutcheon - Entrance Mortise locks with latch & deadbolt – Standard Handle (Left Hand) |
| AA-ACC-EN-LOCK-SR | Escutcheon - Entrance Mortise locks with latch & deadbolt – Standard Handle (Right Hand) |
| AA-ACC-EN-LOCK-DL | Escutcheon - Entrance Mortise locks with latch & deadbolt – D Handle (Left Hand) |
| AA-ACC-EN-LOCK-DR | Escutcheon - Entrance Mortise locks with latch & deadbolt – D Handle (Right Hand) |

Store Room Mortise Lock

| | |
|-------------------|---|
| AA-ACC-ST-LOCK-SL | Escutcheon - Storeroom Lock Mortise Latch Only – Standard Handle (Left Hand) |
| AA-ACC-ST-LOCK-SR | Escutcheon - Storeroom Lock Mortise Latch Only – Standard Handle (Right Hand) |
| AA-ACC-ST-LOCK-DL | Escutcheon - Storeroom Lock Mortise Latch Only – D Handle (Left Hand) |
| AA-ACC-ST-LOCK-DR | Escutcheon - Storeroom Lock Mortise Latch Only – D Handle (Right Hand) |

Cards

| | |
|------------------|---|
| AA-ACC-IC CARD | Special IC Card: Activates the card issuing system. (System Card) |
| AA-ACC-RECORD | Recorder Card: Reads the Audit Trail Information from the Locking devices |
| AA-ACC-USER CARD | User Cards: Writeable User Cards |

Product Accessories

| | |
|-------------|--|
| AA-ACC-WALL | Wall RFID Door Access Controller (Includes) - Power Supply & REX (Request to Exit Button) |
|-------------|--|

ASSA ABLOY

ASSA ABLOY is the global leader in door opening solutions, dedicated to satisfying end-user needs for security, safety and convenience.

ASSA ABLOY is represented in all major regions, in both mature and emerging markets, with leading positions in Australasia, Europe and North America.

As the world's leading lock group, ASSA ABLOY offers a more complete product range of door opening solutions than any other company in the market.